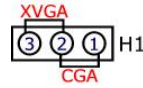
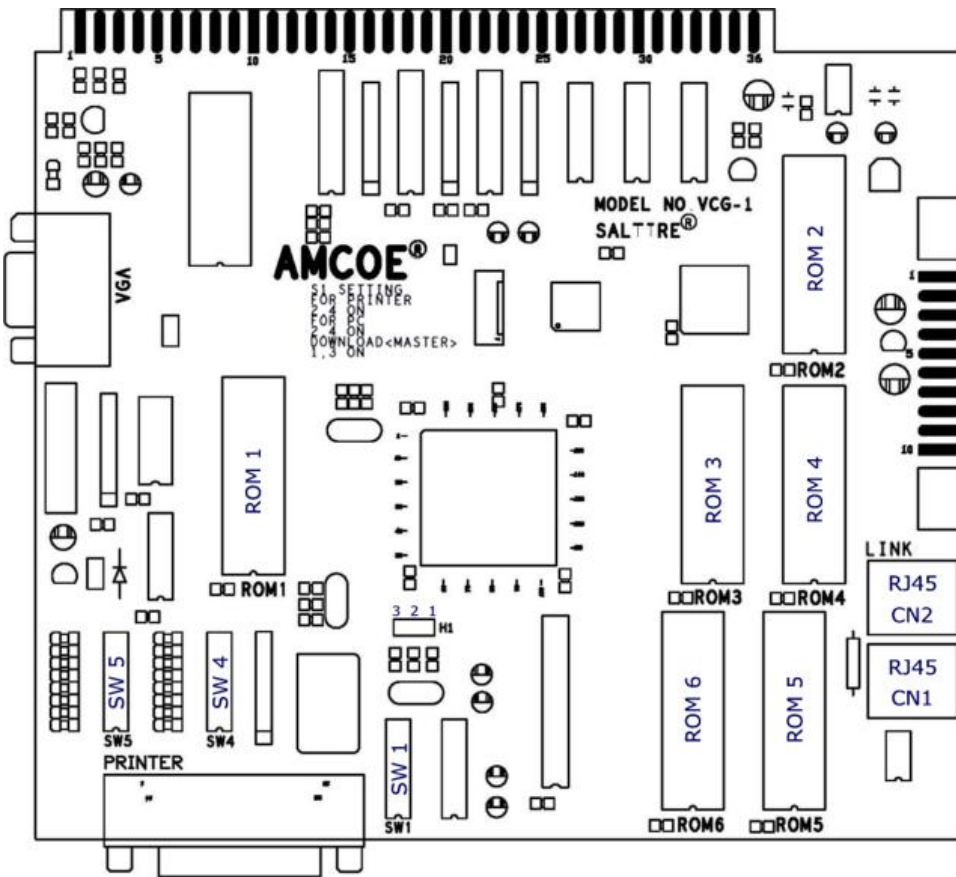


MERRY CIRCUS Copyright © AMCOE INC.

PIN	PARTS SIDE	SOLDER SIDE	PIN
1	VIDEO RED	VIDEO GREEN	1
2	VIDEO BLUE	VIDEO SYNC	2
3	SPEAKER +	SPEAKER -	3
4			4
5			5
6			6
7	TICKET OUT BUTTON – for ticket dispenser direct drive		7
8	TICKET NOTCH – ticket dispenser		8
9	START / TAKE / ALL STOP (SHARED)		9
10	GAME RULES / STOP 4 / SMALL (SHARED)		10
11	PLAY / CHECK / STOP 1 (SHARED)		11
12	STOP 5 / TAKE (SHARED)		12
13	AUTO PLAY / STOP 3 / DOUBLE (SHARED)		13
14			14
15			15
16	STOP 2 / BIG (SHARED)		16
17			17
18	COIN 1 IN (point value reference)	KEY IN	18
19	SERVICE IN	COIN 2 IN	19
20	SERVICE MENU	SERVICE MENU	20
21	HOPPER PAYOUT - panel	CLEAR / PRINTER / INTERFACE - panel	21
22		*HOPPER SWITCH - hopper	22
23	COIN 1 IN METER		23
24	KEY IN METER		24
25			25
26	COIN 2 IN METER		26
27	HOPPER METER		27
28	CLEAR / TICKET METER		28
29	START / TAKE / ALL STOP LAMP		29
30	GAME RULES / STOP 4 / SMALL LAMP		30
31	PLAY / CHECK / STOP 1 LAMP		31
32	STOP 5 / TAKE LAMP		32
33	AUTO PLAY / STOP 3 / DOUBLE LAMP		33
34	STOP 2 / BIG LAMP		34
35			35
36	GND	GND	36

PIN	PARTS SIDE	SOLDER SIDE	PIN
1	GND	GND	1
2	GND	GND	2
3	+5V	+5V	3
4	+5V	+5V	4
5	+12V	+12V	5
6	+12V	+12V	6
7	TICKET DISPENSER ENABLE		7
8	HOPPER SSR		8
9	GND	GND	9
10	GND	GND	10

* HOPPER SWITCH - auto detect normal low (mostly micro switch type) or normal high (mostly sensor type)
 SHADED PIN OUTS ARE NOT AVAILABLE IN LIMIT WIN VERSION



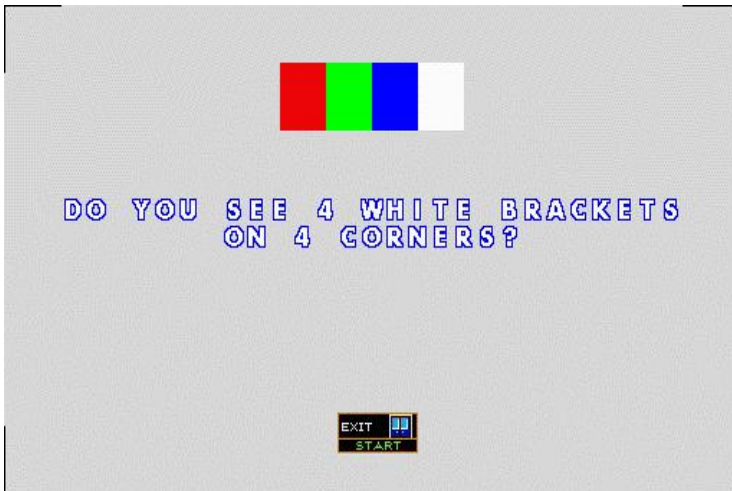
Hardware platform VCG-1 has two types of video output, CGA and XVGA. Jumper H1 (located near SW1) 1 & 2 connected is CGA output; 2 & 3 connected is XVGA output. When using CGA output, connect video output signals on the edge connector. When using XVGA output, use the standard VGA connector on the board; also, monitor used has to support H-scan frequency 31.5kHz and V-scan frequency 120Hz or higher. ROM1 is the program ROM. ROM1 must match with the type of video output intended to be used.

LINK

Link with all other AMCOE linkable platforms with CAT5 cable. LINK CN1 and CN2 are RJ45.

PRINTER

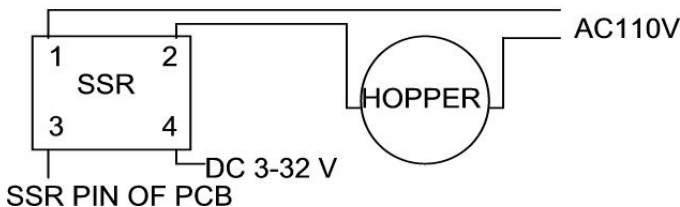
SW1 #2 & #4 ON is to enable the RS232 port for printer and/or PC download.



MONITOR ADJUSTMENT

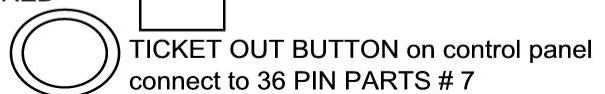
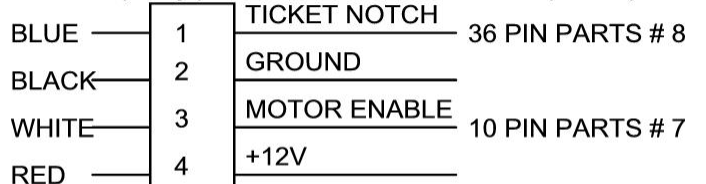
In the monitor adjustment screen, adjust sizes and positions such that the four (4) corner brackets (white color) are visible and close to the corners of the monitor. For CGA monitor, re-tuning of monitor sync may be required in order to obtain the best picture result.

Hopper Connection Diagram



Ticket Dispenser Connection Diagram

DL-1275 (verify pinouts on manual of ticket dispenser)



MERRY CIRCUS Copyright © AMCOE INC.

DIP SW 4		1	2	3	4	5	6	7	8
DUAL SUPPORT USE ONLY	CGA OUPUT XVGA OUTPUT		OFF ON						

DIP SW 5		1	2	3	4	5	6	7	8	
MONITOR TYPE	KOREAN MADE TAIWANESE MADE	OFF ON	For most monitors used in USA							
UNIT ID SETUP FOR LINKING <i>Each Unit in the Link System must have a unique ID. Monitor used must have an isolation transformer or built-in isolation circuit. Two or more units having the same ID or monitor without an isolation transformer will DAMAGE the board. (Link Control Unit and CAT5 patch cable required. To connect with older type 3 pin link connector, a small connector interface board is required. Just one is needed in the entire link system.)</i>	NO LINK UNIT 1 UNIT 2 UNIT 3 UNIT 4 UNIT 5 UNIT 6 UNIT 7 UNIT 8 UNIT 9 UNIT 10 UNIT 11 UNIT 12 UNIT 13 UNIT 14 UNIT 15		OFF ON OFF ON OFF ON OFF ON OFF ON OFF ON OFF ON OFF ON	OFF OFF ON ON OFF OFF ON ON OFF ON OFF ON OFF ON ON ON	OFF OFF OFF OFF ON ON ON ON ON ON ON ON ON ON ON ON	OFF OFF OFF OFF ON ON ON ON ON ON ON ON ON ON ON ON	OFF OFF OFF OFF ON ON ON ON ON ON ON ON ON ON ON ON			
NO USE	MUST BE								OFF	

All selections are made on screen except those listed in Dip SW 4 and 5.

Please go to SERVICE MENU Screen and enter SET UP page. Follow on screen instructions to adjust available selections. Different versions may have different available selections and selectable ranges. Check Confirm Screen and make necessary adjustment to suit your operation.

Selections that can be adjusted in SET UP page (**NOT** for all versions) are as follow:

- GAME LEVEL:** From LEVEL 1 to LEVEL 6 (LEVEL 1 = highest percentage; LEVEL 6 = lowest percentage)
- COIN 1 TO POINT:** It relates to 36-pin edge connector part side 18. 1 pulse in =? (Reference of the value of each point)
- COIN 2 TO POINT:** It relates to 36-pin edge connector solder side 19. 1 pulse in =?
- KEY IN TO POINT:** It relates to 36-pin edge connector solder side 18. 1 pulse in =? (Use key switch signal)
- POINT IN LIMIT:** Set the maximum limit after which no more point in through COIN 1 & 2 and KEY IN.
- MIN PLAY TO START:** Min point(s) required to start to play a game.
- MIN PLAY FOR BONUS:** Min points required in order to get features such as jackpots, free games, bonus games...etc.
- MAX PLAY EACH LINE:** Max points that can be played on each line.
- CLEAR / TICKET UNIT:** It relates to 36-pin edge connector part side 28. Each pulse out =? point(s).
- CLEAR / TICKET MODE:** It relates to above and regulates maximum how many pulse(s) out each game. Continuous = no limit.
- TICKET OUT:** Ticket Dispenser Direct Drive, Printer Direct, or Interface.
- HOPPER UNIT USE:** Use COIN 1, COIN 2 or CLEAR UNIT as reference.
- HOPPER LIMIT:** Until Empty, 1000 tokens, 500 tokens, 400 tokens or 300 tokens.
- USE SCORE:** If yes, "SCORE" will appear on screen. All points won will be collected to "SCORE". Default = NO.
- SCORE OUT:** Manual (default) or Auto.
- LIMIT SCORE PER GAME:** Limit SCORE per game play to 10 x PLAY or an equivalent of \$5 whichever is less.
- PLAY REMAIN SCORE:** Only when "SCORE" appears on screen. Play directly from "SCORE" when no point left in POINT column.
- COUNT GAME:** This is an advanced count game feature counting eligible pulses out based on TICKET MODE.
- NON-STOP SPIN:** If yes, manual stop is mandatory.
- SHOW ACCOUNT:** If no, cannot go into Account Info page from SERVICE MENU.
- AUTO PLAY OPTION:** If NON-STOP SPIN is set to YES, cannot use AUTO PLAY.
- DEMO MUSIC & SOUND:** YES (default) or NO.
- PRINTER COMMAND:** CBM1 (Citizen) (default), ESC/POS (Epson), STAR emulation, Ithaca 70.

Merry Circus is NOT linkable. Dip Switch 5 UNIT ID SETUP is not applicable.

MERRY CIRCUS Copyright © AMCOE INC.

RESET PROCEDURES:

Dip Switch 4	6	7	8	
Normal Operation	OFF	OFF	OFF	
Reset All Data	ON	OFF	ON	Will not reset settings
Master Reset	ON	ON	ON	Reset settings and all data
To perform any of the above, power off first, set Dip Switch, power on. Follow on screen instruction.				

Changing GAME LEVEL after 5000 Main Games will require reset of all data.

Reference of COIN 1 TO POINT:

COIN MODE	COIN 1 TO POINT	BILL ACCEPTOR SELECTION		\$1 = how many POINTS	LIMIT SCORE MAX \$5 = how many POINTS
		\$1 = 1 PULSE	\$1 = 4 PULSES		
\$0.25 = 1 PT.	1		YES	4	20
	4	YES			
\$0.10 = 1 PT.	10	YES		10	50
	5		YES		
\$0.05 = 1 PT.	20	YES		20	100
	50	YES			
\$0.02 = 1 PT.	25		YES	50	250
	100	YES			

GAME FEATURES OF MERRY CIRCUS:

- 1/ It is a 25-liner game.
- 2/ Win line is bi-directional.
- 3/ There are 3 Jackpots.
- 4/ Bonus Game.
- 5/ Re-spin Chance.

LINE ODDS - BIDIRECTINAL	JACKPOTS, BONUS GAMES and RESPIN CHANCE
<p>LINE ODDS - BIDIRECTIONAL</p>	<p>MIN PLAY FOR BONUS REQUIRED</p> <p>JACKPOT 1 3 OR MORE ANYWHERE GET BONUS GAME</p> <p>JACKPOT 2</p> <p>JACKPOT 3</p> <p>RESPIN CHANCE</p> <p>SYMBOL OF THE SAME TYPE FORM A CROSS SIGN AND NO WINNING OF ANOTHER TYPE OF SYMBOL</p>

Digital meters in Account Info page:

There are two 7-digit digital meters in the Account Info page. They begin with *random* figures of 7-digit when the game is first produced in the factory. These meters cannot be reset. The left hand side one accumulates points into the game and the right hand side one accumulates points out of the game.

PUSH BUTTON LEGEND

STOP 1 PLAY Check	STOP 2 BIG	STOP 3 DOUBLE Auto Play	STOP 4 SMALL Game Rule	STOP 5 TAKE
--	-----------------------------	--	---	------------------------------

ALL STOP START Take
--

STOP 1 PLAY Check	STOP 2 BIG	STOP 3 DOUBLE Auto Play	STOP 4 SMALL Game Rule	STOP 5 TAKE
--	-----------------------------	--	---	------------------------------

ALL STOP START Take
--

STOP 1 PLAY Check	STOP 2 BIG	STOP 3 DOUBLE Auto Play	STOP 4 SMALL Game Rule	STOP 5 TAKE
--	-----------------------------	--	---	------------------------------

ALL STOP START Take
--

STOP 1 PLAY Check	STOP 2 BIG	STOP 3 DOUBLE Auto Play	STOP 4 SMALL Game Rule	STOP 5 TAKE
--	-----------------------------	--	---	------------------------------

ALL STOP START Take
--

Note: Buttons on control panel are also used to make selections in Service Menu; therefore, all six shall be installed.